

INSTALACIONES SANITARIAS

MUNICIPALIDAD DE LA CIUDAD DE SAN LUIS

OBRA: AMPLIACION C.I.C. B° F. BOGADO
UBICACION: SAN LUIS ZONA SUR
PLANO: INSTALACION SANITARIA
SECTOR

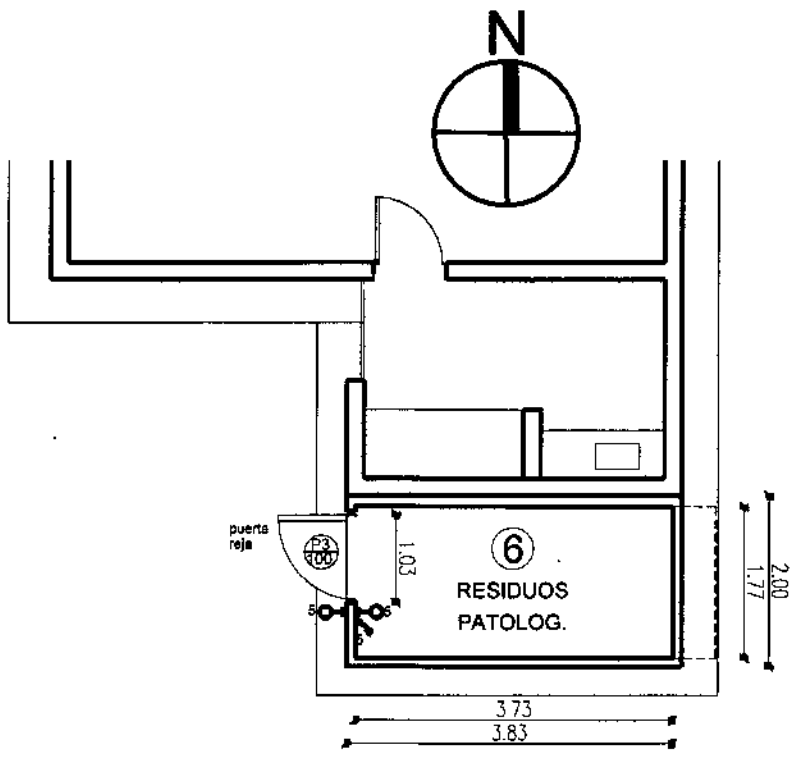
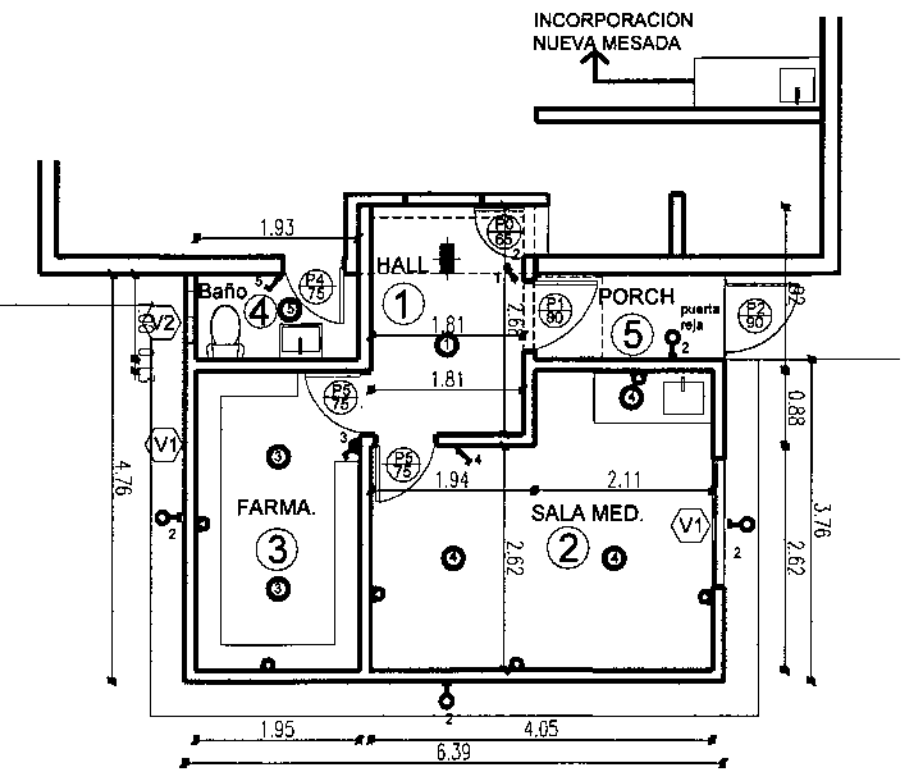
OBSERVACIONES:

FECHA ESCALA
FEBRE 2016 S/E

PLANO N° 4



PLANTA ZONA DE AMPLIACION



MUNICIPALIDAD DE LA CIUDAD DE SAN LUIS

OBRA: AMPLIACION CIC B° F. BOGADO
UBICACION: SAN LUIS ZONA SUR
PLANO: AMPLIACION DEL SECTOR

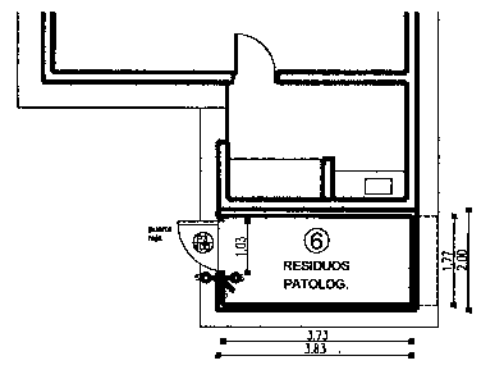
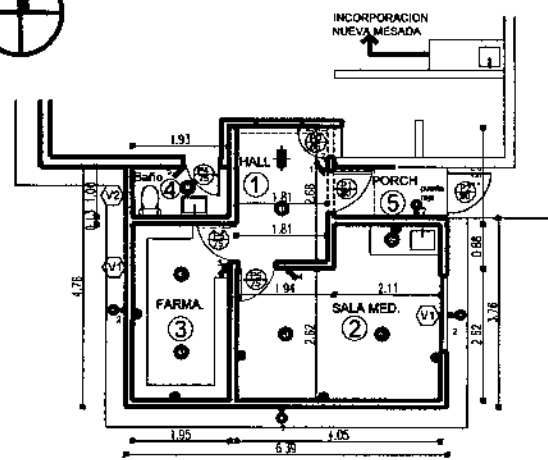
OBSERVACIONES:



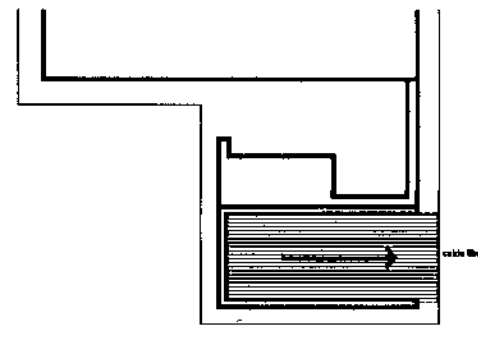
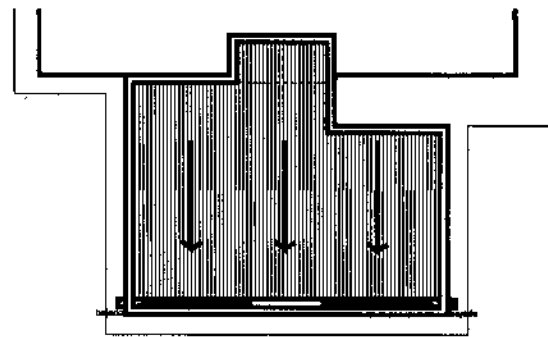
FECHA: ESCALA
FEBRE 2016 S/E
PLANO N°

3

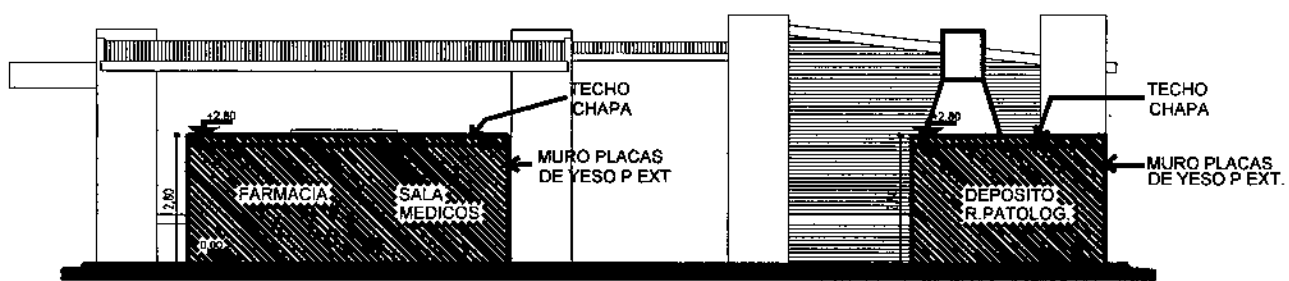




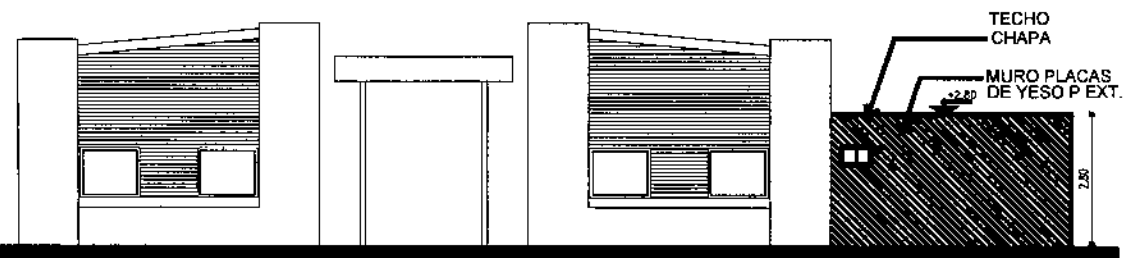
PLANTA AMPLIACION



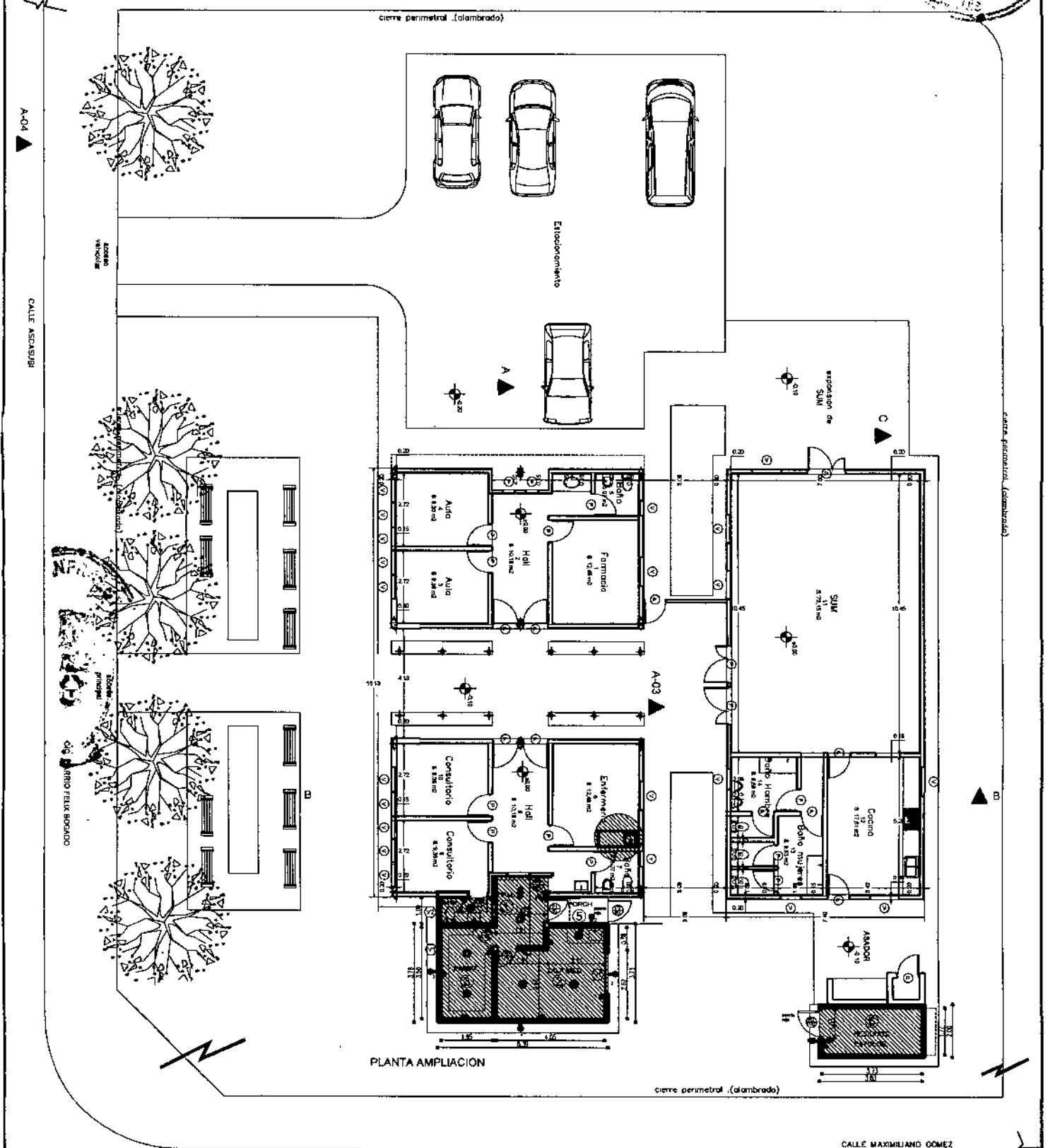
PLANTA DE TECHOS



ALZADO SUR



ALZADO OESTE



PLANTA GRAL - UBICACION SECTOR A AMPLIAR

AREAS A INTERVENIR

